

State of Rhode Island and Providence Plantations

# Budget



## Fiscal Year 2017

Volume IV - Public Safety, Natural Resources and Transportation

Gina M. Raimondo, Governor

# Agency

---

## Rhode Island Emergency Management Agency

---

### Agency Mission

The mission of the Rhode Island Emergency Management Agency (RIEMA) is to reduce the loss of life and property for both natural and man-made incidents by utilizing an all hazards approach to prevention, protection, mitigation, response, and recovery while providing leadership, assistance, and support to regional, state, and local entities.

### Agency Description

RIEMA is responsible for establishing, sustaining and coordinating the resources of the Federal, State, local governments, non-governmental organizations and the private sector to effectively meet the challenges faced during a natural and/or man-made incident. This will be accomplished by the Executive Director through the Governor's authority under R.I.G.L 30-15. The organization's primary goal is to create and oversee a statewide system with an all hazards approach to emergency management and homeland security. RIEMA is also responsible to strengthen the thirty-one (31) core capabilities outlined by the National Preparedness Goal as established by Presidential Policy Directive 8 to reduce loss of life and property within the State of Rhode Island during natural and/or man-made incidents.

The Rhode Island Emergency Management Agency and the State Emergency Operation Center (SEOC) will provide a central location from which all state government at any level can provide interagency coordination and executive decision-making in support of any regional incident or local response. This will be done by: information collection and evaluation, executive decision-making, priority setting, management, coordination & tracking of resources, and interoperable communication facilitation to support any overall response efforts.

### Statutory History

R.I.G.L 30-15 created the Emergency Management function. In 1973, the Rhode Island Defense Civil Preparedness Agency was created by R.I.G.L. 30-15, to replace the former Civil Defense Agency. Executive Order No. 83-5 changed the official name to the Rhode Island Emergency Management Agency. The 2015 Legislature established RIEMA as a stand-alone agency. The 2015 Legislature established RIEMA as a stand-alone agency.

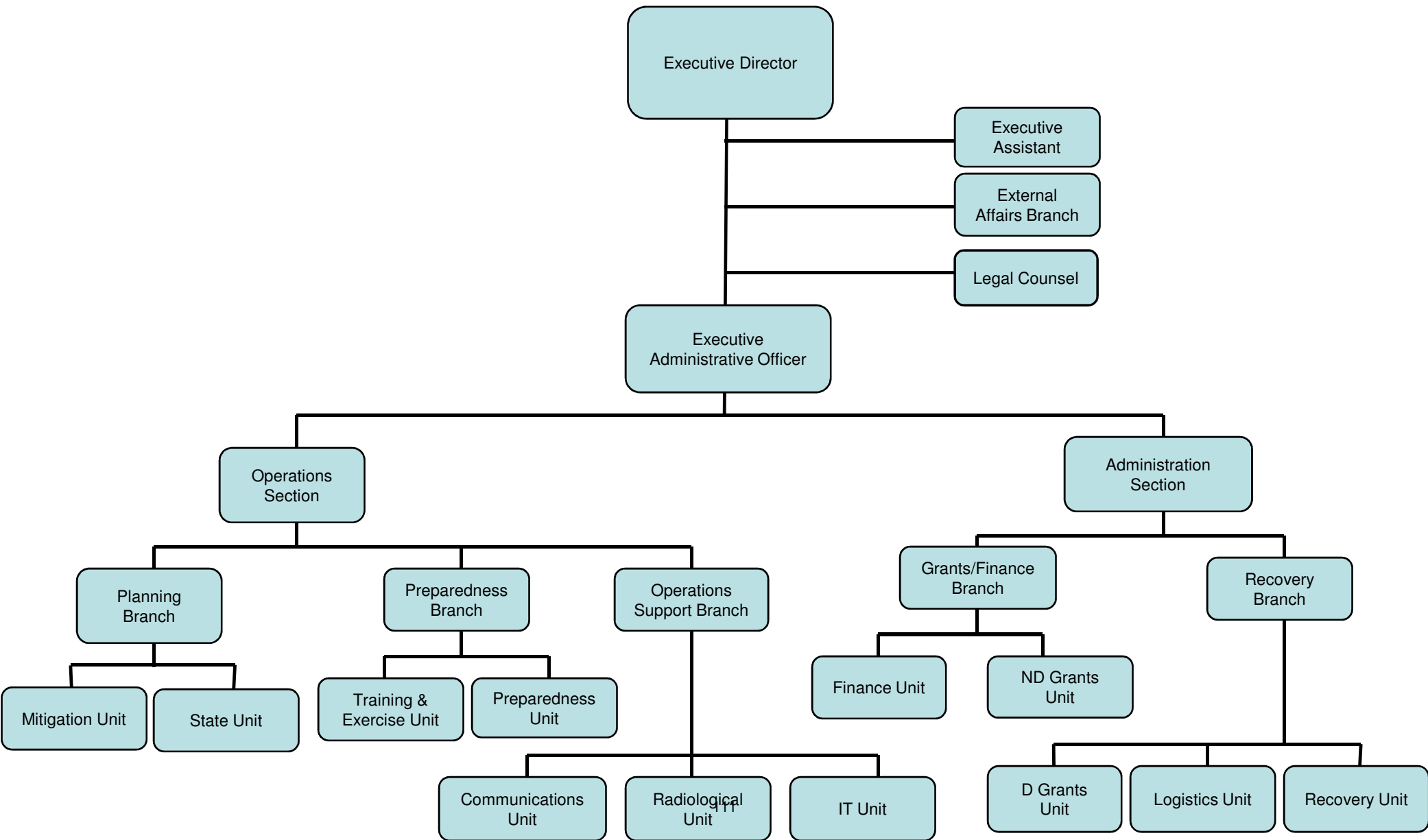
# Budget

## Rhode Island Emergency Management Agency

	FY 2014 Audited	FY 2015 Audited	FY 2016 Enacted	FY 2016 Revised	FY 2017 Recommend
<b>Expenditures By Program</b>					
Central Management	-	14,535,853	18,537,918	28,530,116	23,994,138
<b>Total Expenditures</b>	-	<b>\$14,535,853</b>	<b>\$18,537,918</b>	<b>\$28,530,116</b>	<b>\$23,994,138</b>
<b>Expenditures By Object</b>					
Personnel	-	3,397,286	4,243,432	4,190,777	4,328,539
Operating Supplies and Expenses	-	4,150,197	3,689,972	5,367,817	2,039,590
Assistance and Grants	-	3,308,892	10,596,014	18,739,447	15,850,524
<b>Subtotal: Operating Expenditures</b>	-	<b>10,856,375</b>	<b>18,529,418</b>	<b>28,298,041</b>	<b>22,218,653</b>
Capital Purchases and Equipment	-	1,299,526	8,500	232,075	1,775,485
Operating Transfers	-	2,379,952	-	-	-
<b>Total Expenditures</b>	-	<b>\$14,535,853</b>	<b>\$18,537,918</b>	<b>\$28,530,116</b>	<b>\$23,994,138</b>
<b>Expenditures By Funds</b>					
General Revenue	-	1,796,019	1,766,002	1,762,453	1,848,876
Federal Funds	-	12,622,540	16,551,541	26,233,728	20,094,466
Restricted Receipts	-	117,294	220,375	301,860	861,046
Operating Transfers from Other Funds	-	-	-	232,075	1,189,750
<b>Total Expenditures</b>	-	<b>\$14,535,853</b>	<b>\$18,537,918</b>	<b>\$28,530,116</b>	<b>\$23,994,138</b>
<b>FTE Authorization</b>	<b>0.0</b>	<b>32.0</b>	<b>32.0</b>	<b>32.0</b>	<b>32.0</b>

# The Agency

## State of Rhode Island Emergency Management Agency



# Personnel

## Rhode Island Emergency Management Agency Central Management

	Grade	FY 2016		FY 2017	
		FTE	Cost	FTE	Cost
<b>Classified</b>					
ASSISTANT ADMINISTRATOR, FINANCIAL	00134A	1.0	93,400	1.0	93,965
ADMINISTRATOR, OPERATIONS MANAGEMENT	00141A	1.0	90,247	1.0	95,542
DEPUTY CHIEF OF LEGAL SERVICES	00137A	1.0	86,712	1.0	87,238
ADMINISTRATOR, FINANCIAL MANAGEMENT	00137A	1.0	86,035	1.0	89,706
ASSISTANT CHIEF OF PLANNING	00137A	4.0	343,105	4.0	363,585
INTERDEPARTMENTAL PROJECT MANAGER	00139A	1.0	83,268	1.0	86,861
MANAGEMENT ASSISTANCE SUPERVISOR	03231A	1.0	80,032	1.0	80,508
PROGRAMMING SERVICES OFFICER	03231A	5.0	328,549	5.0	338,191
SUPERVISOR OF ADMINISTRATIVE & TECHNICAL	03229A	1.0	58,467	1.0	61,833
SENIOR TELECOMMUNICATIONS AND WARNING	03226A	1.0	54,910	1.0	55,192
COORDINATOR CIVIL PROTECTION RELOCATION	03226A	11.0	586,341	11.0	600,785
EMERGENCY MANAGEMENT SURVIVABLE CRISIS	03225A	1.0	52,756	1.0	53,076
ASSISTANT COORDINATOR CIVIL PROTECTION	03224A	1.0	47,362	1.0	49,338
EXECUTIVE ASSISTANT	00118A	1.0	40,163	1.0	41,270
<b>Subtotal</b>		<b>31.0</b>	<b>\$2,031,347</b>	<b>31.0</b>	<b>\$2,097,090</b>
<b>Unclassified</b>					
EXECUTIVE DIRECTOR	00847A	1.0	135,125	1.0	140,708
<b>Subtotal</b>		<b>1.0</b>	<b>\$135,125</b>	<b>1.0</b>	<b>\$140,708</b>
Overtime		-	50,000	-	50,000
Turnover		-	(232,254)	-	(80,845)
<b>Subtotal</b>		<b>-</b>	<b>(\$182,254)</b>	<b>-</b>	<b>(\$30,845)</b>
<b>Total Salaries</b>		<b>32.0</b>	<b>\$1,984,218</b>	<b>32.0</b>	<b>\$2,206,953</b>
<b>Benefits</b>					
Payroll Accrual			13,773		14,383
FICA			166,194		171,651
Retiree Health			129,340		133,595
Health Benefits			352,454		361,402
Retirement			533,820		589,437
<b>Subtotal</b>			<b>\$1,195,581</b>		<b>\$1,270,468</b>
<b>Total Salaries and Benefits</b>		<b>32.0</b>	<b>\$3,179,799</b>	<b>32.0</b>	<b>\$3,477,421</b>
<b>Cost Per FTE Position (Excluding Temporary and Seasonal)</b>			<b>\$99,369</b>		<b>\$108,669</b>
<b>Statewide Benefit Assessment</b>			<b>\$99,655</b>		<b>\$106,295</b>
<b>Payroll Costs</b>		<b>32.0</b>	<b>\$3,279,454</b>	<b>32.0</b>	<b>\$3,583,716</b>

# Personnel

## Rhode Island Emergency Management Agency Central Management

	Grade	FY 2016		FY 2017	
		FTE	Cost	FTE	Cost
<b>Purchased Services</b>					
Clerical and Temporary Services			779,823		644,823
Management & Consultant Services			130,000		100,000
Other Contracts			1,500		-
<b>Subtotal</b>			<b>\$911,323</b>		<b>\$744,823</b>
<b>Total Personnel</b>		<b>32.0</b>	<b>\$4,190,777</b>	<b>32.0</b>	<b>\$4,328,539</b>
<b>Distribution By Source Of Funds</b>					
General Revenue		5.2	\$604,881	4.2	\$613,770
Federal Funds		24.8	\$3,344,044	25.8	\$3,466,888
Restricted Receipts		2.1	\$241,852	2.1	\$247,881
<b>Total All Funds</b>		<b>32.0</b>	<b>\$4,190,777</b>	<b>32.0</b>	<b>\$4,328,539</b>

# Performance Measures

## Rhode Island Emergency Management Agency

### ***Emergency Management Accreditation Program (EMAP) Standards Achieved***

The Rhode Island Emergency Management Agency (RIEMA) must meet 64 standards to become nationally accredited by the EMAP. Achieving national standards will lead to safer and more resilient communities. The figures below represent the number of EMAP standards achieved.

	2013	2014	2015	2016	2017
<b>Target</b>	--	--	--	32	64
<b>Actual</b>	--	--	--	--	--

Performance for this measure is reported by calendar year.

### ***StormReady Communities***

The National Weather Service StormReady program helps provide communities with the communication and safety skills needed to save lives and property before and during severe weather events. StormReady helps community leaders and emergency managers strengthen local safety programs. The figures below represent the number of cities and towns that have completed the StormReady program.

	2013	2014	2015	2016	2017
<b>Target</b>	--	--	--	39	39
<b>Actual</b>	3	3	5	--	--

Performance for this measure is reported by calendar year.

### ***CodeRED Communities***

The CodeRED high speed community and emergency notification system helps local and state leaders send time-critical emergency messages needed to save lives and preserve property before and during severe weather events. CodeRED helps community leaders and emergency managers strengthen local safety programs. The figures below represent the number of cities and towns that have enrolled in the CodeRED system.

	2013	2014	2015	2016	2017
<b>Target</b>	--	--	24	39	39
<b>Actual</b>	14	18	20	--	--

Performance for this measure is reported by calendar year.